

Menu

Soucoupe Café

6910 Fabre Street, Montreal, NAMED H2G | (514) 759-1638

Articles en vedette



Grilled Cheese de luxe

12,00 \$

Sur pains aux olives



Croissant Déj / Breakfast Croissant

11,00 \$

Ouf, cheddar fort sur croissant. / Egg, sharp cheddar on croissant.



Coco Superstar / Superstar Coconut

8,00 \$

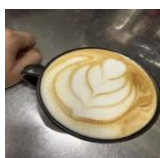
Ouf, feta, aneth, mayo sur muffin Anglais. / Egg, feta, dill, mayo on English muffin.



Sandwich broccconcini /brocconchini Sandwich

13,00 \$

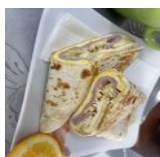
Pesto, brocconchini, mayo, tomate et verdure sur un pain aux olives/Pesto, brocconchini, mayo, tomato and greens on olive bread



Café Latté 12Oz / Latte Coffee 12oz

6,50 \$

Rich and smooth coffee made with espresso and steamed milk.



Wrap déjeuner

10,00 \$

Tortillas, oeuf, jambon et fromage gouda fumé/Tortillas, egg, ham and smoked gouda cheese

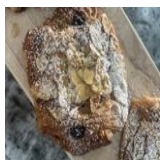


Quiche chèvres épinards

8,50 \$

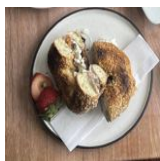
Goat cheese and spinach in a rich quiche filling.

Menu Soucoupe Café



Feuilleté Chocolatine aux Amandes / Almond Chocolatine Puff Pastry **5,00 \$**

Flaky puff pastry filled with rich chocolate and crunchy almonds.



Bagel Saumon Fumé / Smoked Salmon Bagel **14,50 \$**

Smoked salmon on a toasted bagel.



matcha latté glacé 12oz **7,65 \$**

Iced green tea latte, refreshing and smooth.



Brioche a la cannelle végane **6,55 \$**

Soft, vegan cinnamon-flavored brioche with a delicate texture.



Sandwich Tomates **10,00 \$**

Mayo, tomate et verdure sur un pain aux olives / Mayo, tomato and greens on olive bread



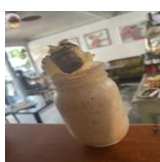
Gateaux végane banane **5,30 \$**

Moist banana cake, a sweet vegan treat.



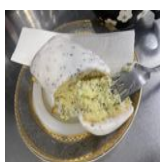
Flaybine espresso de Narval café lab **23,50 \$**

Notes de dégustation chocolat - amande - cerise Tasting Notes
chocolate-almond-cherry



Milkshake bueno **10,00 \$**

Avec kinder bueno



Gateaux citron pavot **5,00 \$**

Lemon and poppy seed cake, a sweet and tangy delight.

Menu Soucoupe Café



Crêpe bretonne au sarrasin

Buckwheat crepe filled with savory ingredients.

16,00 \$



Smoothie au fruits rouges 12oz

Au fruits rouge

8,50 \$

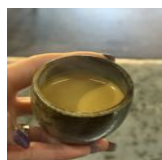


Dirty Chai 12Oz

Rich and aromatic black tea infused with a shot of espresso.

7,55 \$

Les Cafés chauds / hot Coffees



Espresso Double

Rich and bold espresso, expertly double-shot for a intense coffee experience.

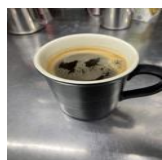
3,95 \$



Café Allongé / Elongate Coffee

Rich and smooth coffee, expertly brewed to bring out the full flavour.

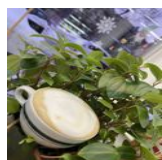
3,95 \$



Café Americano / Americano Coffee

Rich and smooth coffee made from espresso and hot water.

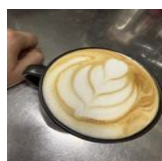
4,00 \$



Cappuccino

Rich and smooth espresso-style coffee drink.

5,50 \$



Café Latté 12Oz / Latte Coffee 12oz

Rich and smooth coffee made with espresso and steamed milk.

6,50 \$

Menu Soucoupe Café



Cortado / Cortado Coffee

5,00 \$

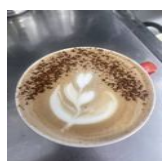
Rich and smooth coffee drink with a perfect balance of espresso and milk.



Misto

4,50 \$

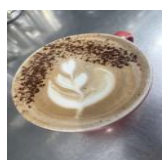
Rich and aromatic coffee blend.



Mochaccino 12Oz / Mochachino Coffee

7,50 \$

Rich and creamy espresso drink blended with chocolate syrup.



Chocolat Chaud 12 oZ / Hot Chocolate

5,50 \$

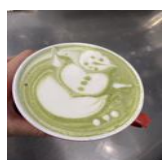
Rich and creamy hot chocolate.



Chai Latté 12Oz / Latte Chai

7,50 \$

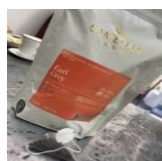
Spiced black tea latte in a rich and creamy blend.



Matcha Latté 12OZ / Latte Matcha

7,65 \$

Green tea-flavored latte.



Thé Earl Grey Camélia / Camelia Tea

3,65 \$

Earl Grey tea infused with the delicate flavour of Camelia flowers.



Tisanes menthe Camélia / Camelia Herbal Tea

3,65 \$

Soothing herbal tea infused with peppermint and Camelia flowers.



Thé vert SENCHA NAGASHIMA Camélia / Camelia Tea

3,65 \$

Japanese green tea from Nagashima, Camelia.

Menu Soucoupe Café



Thé PERLES AU JASMIN Camélia / Camelia Tea

3,65 \$

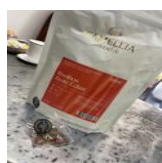
Jasmine tea with delicate floral notes.



Thé noir Assam Camélia / Camelia Tea

3,65 \$

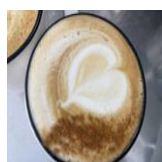
Strong and malty black tea from Assam, infused with delicate Camelia flowers.



Thé Rooibos Zeste Eclair Camélia / Camelia Tea Rooibos Zeste Eclair

3,65 \$

Rooibos tea infused with a hint of zeste, served in a delicate éclair.



Dirty Chai 12Oz

7,55 \$

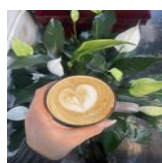
Rich and aromatic black tea infused with a shot of espresso.



Flat White

5,25 \$

Rich and velvety coffee drink.



Latté 3 épices 12Oz

6,50 \$

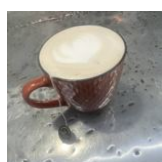
Rich and aromatic coffee blend with a hint of three spices.



Latté curcuma 12Oz

6,80 \$

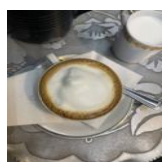
Turmeric-flavored latte in a 12-ounce cup.



London fog

6,55 \$

thé earl grey avec la vanille et lait de votre choix



macchiato

4,25 \$

espresso court avec un peu de mousse de lait

Menu Soucoupe Café



lait d'or

Rich and creamy coffee drink.

5,90 \$



Red Velvet latté 12 OZ

Espresso and steamed milk with a red velvet flavour, 12 oz.

7,00 \$

Douceurs Sucrées / Sweets



Croissants aux beurre

Buttery, flaky pastry.

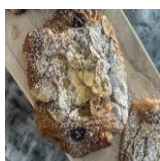
3,50 \$



Feuilleté Chocolatine / Puff Pastry with Chocolatine Filling

Flaky puff pastry filled with rich, velvety chocolate.

4,00 \$



Feuilleté Chocolatine aux Amandes / Almond Chocolatine Puff Pastry 5,00 \$

Flaky puff pastry filled with rich chocolate and crunchy almonds.



Biscuit S'Mores

Biscuit chococlat guimauve

5,00 \$



Feuilleté Croissant aux Amandes / Almond Croissant Puff Pastry

Flaky puff pastry filled with almond goodness.

4,50 \$



Biscuit Pacane chocolat

Biscuits pacanes et chocolat

5,00 \$

Menu Soucoupe Café



Biscuit Avoine Chocolat

Rich, buttery biscuit with avocado and dark chocolate.

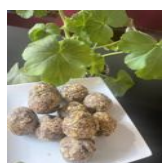
5,00 \$



Biscuits 3 chocolats

chocolat au lait, blanc et noir

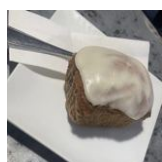
5,00 \$



Boules d'énergie

À l'unité

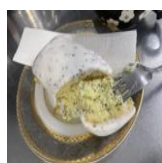
3,50 \$



Gateaux Carottes

Moist carrot cake with a sweet and delicate flavour.

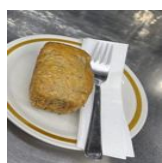
5,00 \$



Gateaux citron pavot

Lemon and poppy seed cake, a sweet and tangy delight.

5,00 \$



Gateaux végane banane

Moist banana cake, a sweet vegan treat.

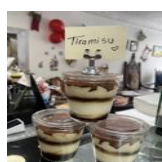
5,30 \$



Gateaux végane choco

Rich, chocolatey vegan cake.

5,20 \$



TIRAMISU

Coffee-soaked ladyfingers layered with creamy mascarpone cheese.

7,00 \$



Brawnies Chocolat

Rich, velvety chocolate treat.

6,00 \$

Menu Soucoupe Café



cannelé

Traditional French small, delicate cakes with a soft, chewy centre.

4,00 \$



Brioche a la cannelle végane

Soft, vegan cinnamon-flavored brioche with a delicate texture.

6,55 \$



Macaron

Delicate French confection with a crisp shell and smooth filling in assorted flavours.

3,00 \$

Muffin caramel

4,50 \$

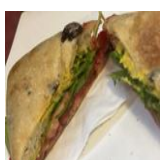
Sandwichs / Sandwiches



Sandwich brocconcini /brocconchini Sandwich

Pesto, brocconchini, mayo, tomate et verdure sur un pain aux olives/Pesto, brocconchini, mayo, tomato and greens on olive bread

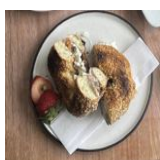
13,00 \$



Sandwich Végé / Veggie Sandwich

Hummus et végé pâté, tomates et verdure sur pain aux olives maison. / Hummus and veggie pâté, tomatoes, cucumber, and greens on homemade olive bread.

11,00 \$



Bagel Saumon Fumé / Smoked Salmon Bagel

Smoked salmon on a toasted bagel.

14,50 \$

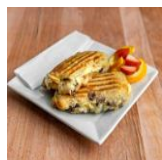


Coco Superstar / Superstar Coconut

Ouf, feta, aneth, mayo sur muffin Anglais. / Egg, feta, dill, mayo on English muffin.

8,00 \$

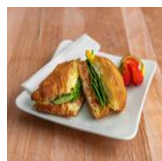
Menu Soucoupe Café



Grilled Cheese de luxe

Sur pains aux olives

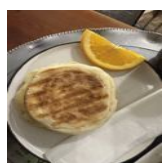
12,00 \$



Croissant Déj / Breakfast Croissant

Ouf, cheddar fort sur croissant. / Egg, sharp cheddar on croissant.

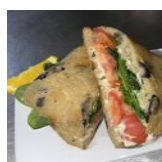
11,00 \$



grilled cheese classique

sur un muffin anglais

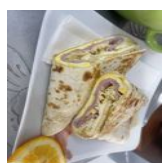
8,60 \$



Sandwich Tomates

Mayo,tomate et verdure sur un pain aux olives /Mayo, tomato and greens on olive bread

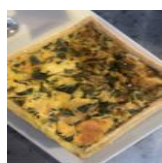
10,00 \$



Wrap déjeuner

Tortillas,oeuf,jambon et fromage gouda fumé/Tortillas, egg, ham and smoked gouda cheese

10,00 \$



Quiche chèvres épinards

Goat cheese and spinach in a rich quiche filling.

8,50 \$



cake salé

Savory French loaf with sun-dried tomatoes, perfect for a light meal or snack.

7,00 \$



Crêpe bretonne au sarrasin

Buckwheat crepe filled with savory ingredients.

16,00 \$



Quiche Poireau et Brie

A savory tart combining leek and brie for a balanced, mild flavour.

8,50 \$

Menu Soucoupe Café



Quiche Lorraine

Classic French tart with a savory custard filling, traditionally made with eggs, cream, and bacon.

8,50 \$

Bagel Fromage à la Crème / Cream Cheese Bagel

Soft, toasted bagel spread with rich cream cheese.

6,20 \$

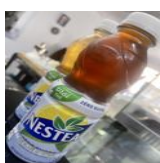
Boissons Estivales froides/ cold Summer Drinks



Latté Glacé 12oz / Iced Milk Coffee

Rich and creamy iced coffee made with milk.

7,75 \$



Thé Glacé nestea / Homemade Iced Tea

Refreshing summer drink made with Nestea.

3,75 \$



Limonade maison 12OZ

Freshly squeezed lemonade, perfect for hot summer days.

7,25 \$



Nectar 125ml

Fresh summer drink

3,00 \$



Chai latté glacé 12Oz

Iced tea latte blended with milk and spices.

7,25 \$



Café Glacé 12oz / Iced Coffee

Rich and smooth iced coffee, perfect for warm days.

5,50 \$

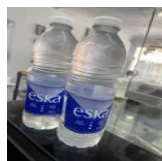
Menu Soucoupe Café



café affogato

creme glacé vanille maison avec double espresso

6,95 \$



Eau minérale (Eska)

Sparkling water infused with a touch of Eska essence.

2,30 \$



jus pomme

Fresh apple juice.

3,55 \$



jus orange

Freshly squeezed orange juice.

3,55 \$



matcha latté glacé 12oz

Iced green tea latte, refreshing and smooth.

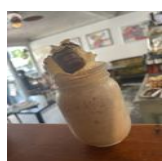
7,65 \$



Milkshake classique

a la vanille

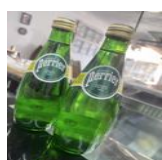
8,00 \$



Milkshake bueno

Avec kinder bueno

10,00 \$



Perrier nature

classique

2,55 \$

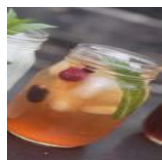


Smoothie au fruits rouges 12oz

Au fruits rouge

8,50 \$

Menu Soucoupe Café



Thé glacé maison

French-style iced tea, refreshing and sweet.

7,25 \$



ORANGINA

Fruity and bubbly drink with a unique blend of flavors.

4,50 \$

chocolat froid 12oz

Rich and creamy chocolate drink.

6,60 \$

Moccachino glacé 12 oz

Rich and creamy coffee drink served chilled.

7,80 \$

Grain de café



flagship de Narval 500g

Notes de dégustation miel - tangerine - mélasse Tasting Notes honey - tangerine - molasses

28,00 \$



décaféiné 500g

Decaffeinated coffee beans in 500g pack.

30,00 \$



décaféiné 250g

Decaffeinated coffee beans in 250g pack.

15,00 \$



flagship de Narval 340g

Notes de dégustation miel - tangerine - mélasse Tasting Notes honey - tangerine - molasses

23,50 \$

Menu Soucoupe Café



Flaybine espresso de Narval café lab

23,50 \$

Notes de dégustation chocolat - amande - cerise Tasting Notes
chocolate-almond-cherry



Patio libre de Narval café lab

23,50 \$

Notes de dégustation ananas -raisin - jasmin Tasting Notes pineapple - grape -
jasmine

lait végétaux



concentré du Chai

12,00 \$

Concentrated plant-based milk alternative.



lait d'avoine

7,60 \$

Plant-based milk alternative made from oats.



lait d'amande

7,60 \$

Almond-based milk alternative.



Lait de soya

7,00 \$

Soy-based milk alternative.



Lait de coco

7,00 \$

Coconut-based milk alternative.