



Menu

Dessert Coréen Crofre ????

4207 R. Notre Dame O, Montréal, QC H4C 1R4, Canada | (514) 933-9255

Most Ordered



07. Fruits et Nutella / Fruit and Nutella

CA\$10.99

Crispy waffle topped with fresh banana slices, strawberries, and a generous drizzle of Nutella.



09. Tiramisu

CA\$9.99

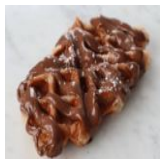
Layers of espresso-soaked ladyfingers with mascarpone cheese, dusted with cocoa powder.



15. Banane brûlée / Banana Brulee

CA\$10.99

Caramelized bananas topped with a delicate layer of sugar crust and sprinkled with chopped walnuts.



08. Nutella

CA\$11.99

A decadent spread of Nutella on a freshly prepared base, sprinkled with powdered sugar.



01. Nature / Plain

CA\$5.99

Golden-brown waffle with a dusting of powdered sugar.



11. Lotus

CA\$9.99

A delicate assembly of soft meringues layered with rich caramel and a sprinkle of sea salt crystals.



06. Fraise / Strawberry

CA\$9.99

Crispy waffle topped with fresh strawberries and dollops of whipped cream, dusted with powdered sugar.

Menu Dessert Coréen Crofre ????



10. Oreo

Crumbled Oreo cookies layered over a soft, sweet base, topped with a whole Oreo.

CA\$9.99



12. Mangue / Mango

Sliced mango atop a creamy, whipped base, garnished with delicate sprigs of thyme.

CA\$9.99

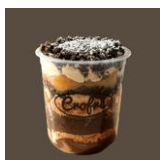


17. Cannelle et Sucre / Cinnamon sugar

Coated with cinnamon sugar, this waffle is dusted with powdered sugar for a sweet finish.

CA\$7.99

Cup Tiramisu / Tiramisu en Coupe



Oreo Cup Tiramisu / Tiramisu à l'Oreo

Layers of mascarpone cream, coffee-soaked ladyfingers, and crushed Oreo cookies, topped with a whole Oreo.

CA\$8.99



Matcha Cup Tiramisu / Tiramisu au Matcha

Layers of creamy mascarpone and matcha-soaked sponge, topped with a dusting of matcha powder and white chocolate shavings.

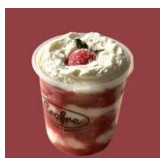
CA\$9.99



Original Cup Tiramisu / Tiramisu Original

Layers of creamy mascarpone and coffee-soaked sponge, topped with cocoa and chocolate shavings.

CA\$8.99



Strawberry Cup Tiramisu / Tiramisu à la Fraise

Layers of mascarpone cream, coffee-soaked ladyfingers, and fresh strawberries, topped with whipped cream and a whole strawberry.

CA\$8.99

Menu

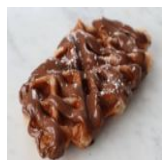


07. Fruits et Nutella / Fruit and Nutella

Crispy waffle topped with fresh banana slices, strawberries, and a generous drizzle of Nutella.

CA\$10.99

Menu Dessert Coréen Crofre ????



08. Nutella

A decadent spread of Nutella on a freshly prepared base, sprinkled with powdered sugar.

CA\$11.99



15. Banane brûlée / Banana Brulee

Caramelized bananas topped with a delicate layer of sugar crust and sprinkled with chopped walnuts.

CA\$10.99



21. Pistachio / Pistache

Crispy pastry topped with whipped cream, pistachio cream, and chopped pistachios.

CA\$10.99



06. Fraise / Strawberry

Crispy waffle topped with fresh strawberries and dollops of whipped cream, dusted with powdered sugar.

CA\$9.99



17. Cannelle et Sucre / Cinnamon sugar

Coated with cinnamon sugar, this waffle is dusted with powdered sugar for a sweet finish.

CA\$7.99



25. Bueno

Crispy pastry topped with whipped cream, chocolate syrup, and pieces of Kinder Bueno chocolate.

CA\$10.99



09. Tiramisu

Layers of espresso-soaked ladyfingers with mascarpone cheese, dusted with cocoa powder.

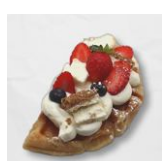
CA\$9.99



12. Mangue / Mango

Sliced mango atop a creamy, whipped base, garnished with delicate sprigs of thyme.

CA\$9.99



19. Gâteau au fromage à la barre / Berry Cheesecake

Creamy cheesecake topped with fresh strawberries, blueberries, whipped cream, and a sprinkle of powdered sugar.

CA\$10.99

Menu Dessert Coréen Crofre ????



03. Bleuets / Blueberry

CA\$10.99

A waffle topped with a generous dollop of whipped cream and a scattering of fresh blueberries.



11. Lotus

CA\$9.99

A delicate assembly of soft meringues layered with rich caramel and a sprinkle of sea salt crystals.



10. Oreo

CA\$9.99

Crumbled Oreo cookies layered over a soft, sweet base, topped with a whole Oreo.



18. Noisettes / Hazelnut

CA\$10.99

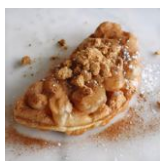
A flaky pastry topped with whipped cream, crushed hazelnuts, chocolate drizzle, powdered sugar, and a chocolate-covered hazelnut.



04. Banane et fraise / Banana and Strawberry

CA\$9.99

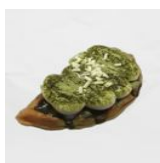
Fresh banana slices and strawberries atop a waffle, lightly dusted with powdered sugar.



16. La croustade aux pomme / Apple Crisp

CA\$9.99

Warm, spiced apples topped with a buttery, crumbly streusel and a dusting of powdered sugar.



22. Matcha Tiramisu / Tiramisu au Matcha

CA\$9.99

Delicate layers of matcha-infused mascarpone cream, topped with a dusting of matcha powder and white chocolate shavings.



20. Earl Grey

CA\$9.99

Creamy milk tea-infused dessert topped with whipped cream, white chocolate shavings, and a hint of Earl Grey flavor.



23. Kit Kat

CA\$10.99

Crispy waffle topped with whipped cream, crushed Kit Kat pieces, and a whole Kit Kat bar.

Menu Dessert Coréen Crofre ????



13. S'mores

A decadent assembly of toasted marshmallows and rich chocolate drizzle over a crispy, golden base.

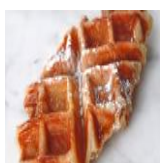
CA\$9.99



24. Coffee Crisp

Rich pastry topped with whipped cream, crumbled coffee-flavored chocolate, and a chunk of Coffee Crisp bar.

CA\$10.99



01. Nature / Plain

Golden-brown waffle with a dusting of powdered sugar.

CA\$5.99



02. Crème / Cream

A generous dollop of whipped cream atop a freshly baked, golden-brown waffle.

CA\$7.99

Boisson en bouteille



Latte à la vanille / Vanilla Latte

A creamy blend of espresso and milk with a hint of vanilla, presented in a bottle.

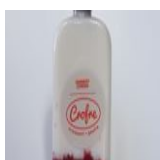
CA\$6.99



Hojicha Latte

Roasted green tea blended with milk for a smooth, aromatic drink.

CA\$6.99



Latte à la fraise / Strawberry Latte

A creamy coffee latte infused with sweet strawberry flavors.

CA\$6.99



Latte à la mangue / Mango Latte

A creamy coffee latte blended with sweet mango puree, presented in a bottle for a refreshing twist on a classic drink.

CA\$6.99

Menu Dessert Coréen Crofre ????



Jasmine guava

A refreshing blend of jasmine and guava juice, offering a delicate floral aroma paired with tropical sweetness.

CA\$6.99



Thé au hibiscus / Hibiscus tea

Steeped hibiscus flowers offering a tart, cranberry-like flavor in a refreshing tea.

CA\$2.99



Latte Matcha / Matcha Latte

A creamy blend of steeped green tea and milk, with a distinct matcha flavor.

CA\$6.99



Americano

A rich blend of espresso and water, creating a smooth and strong bottled coffee experience.

CA\$3.49



Latte

A blend of espresso and steamed milk, presented in a bottled form for convenience.

CA\$5.99

Extra



Caramel

A rich, smooth caramel, often served as a delightful addition to various desserts.

CA\$1.99



Crushed Oreo

A generous topping of crushed Oreo pieces over a creamy base, crowned with a whole Oreo cookie.

CA\$2.99



Crushed Lotus

Crushed lotus seeds sprinkled with a dusting of cinnamon atop soft, pillowy meringues.

CA\$2.99

Menu Dessert Coréen Crofre ????



Sirop d'érable / Maple syrup

CA\$1.99

Pure maple syrup, typically including a rich and authentic taste derived directly from the sap of maple trees.



Nutella on the side

CA\$1.99

A side of rich, creamy Nutella spread, perfect for enhancing any dessert.
